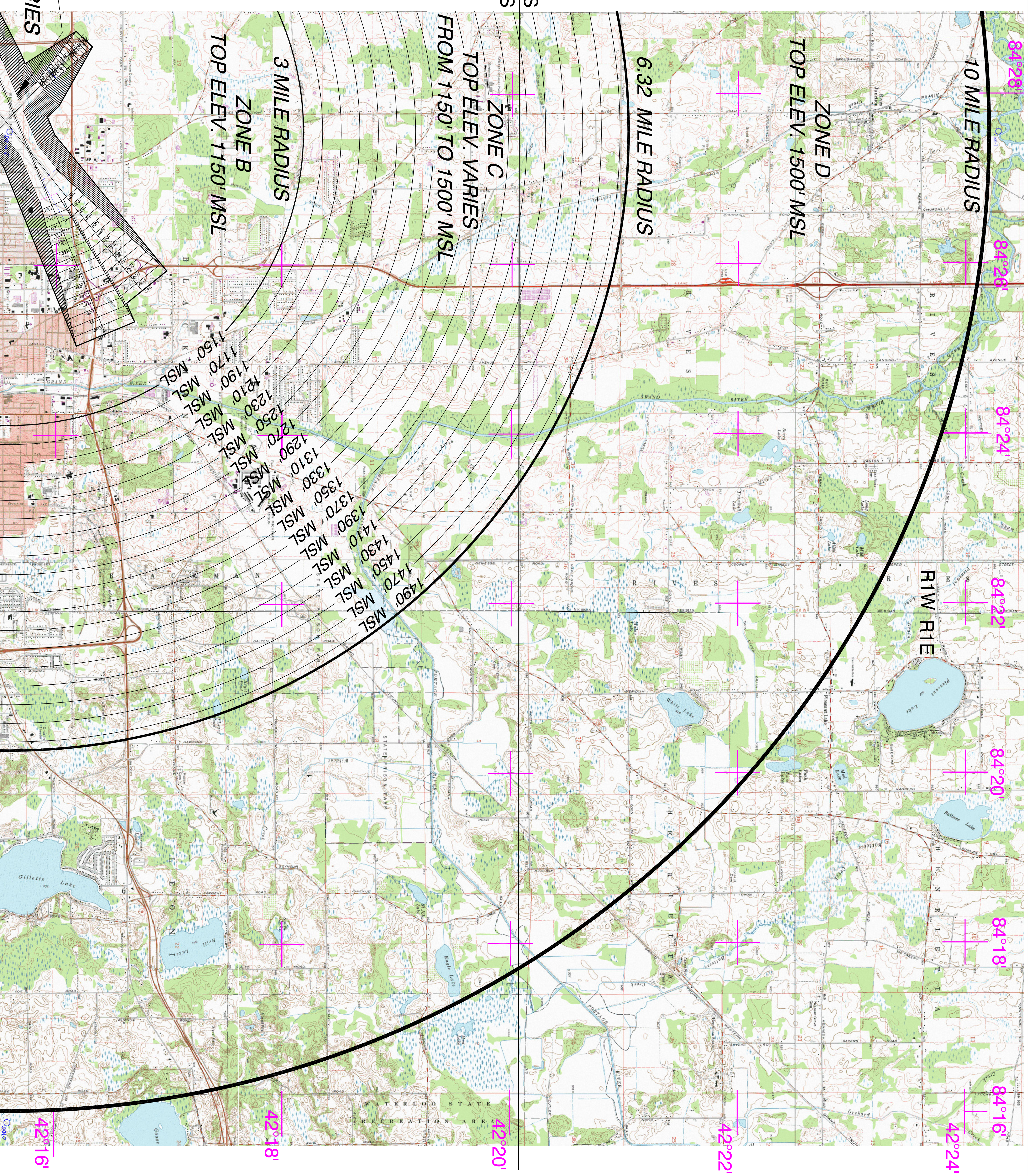


- NOTES:
- 1.) SEE SHEET 2 OF 8 FOR GENERAL NOTES.
 - 2.) SEE SHEET 7 OF 8 FOR DETAIL OF ZONE A.
 - 3.) RUNWAY LAYOUTS & ASSOCIATED APPROACHES REFLECT EXISTING RUNWAY 6/24 (5334), EXISTING RUNWAY 14/32 (4000) AND FUTURE RUNWAY 7/25 (5350).



ZONE A
TOP ELEV. VARIES

10 MILE RADIUS
ZONE D
TOP ELEV. 1500' MSL

6.32 MILE RADIUS
ZONE C
TOP ELEV. VARIES
FROM 1150' TO 1500' MSL

3 MILE RADIUS
ZONE B
TOP ELEV. 1150' MSL

1150' MSL
1170' MSL
1190' MSL
1210' MSL
1230' MSL
1250' MSL
1270' MSL
1290' MSL
1310' MSL
1330' MSL
1350' MSL
1370' MSL
1390' MSL
1410' MSL
1430' MSL
1450' MSL
1470' MSL
1490' MSL

84°28'
84°26'
84°24'
84°22'
84°20'
84°18'
84°16'
42°24'
42°22'
42°20'
42°18'
42°16'

JOB NO. J118-999C	DWG. NO. NORTH-EAST FILE NUMBER 38-1	DESIGNED SADW 5/01		LANSING OFFICE 2605 E. AIRPORT SERVICE DR. LANSING, MI 48906 PHONE # 517-321-8334 FAX # 517-321-5932	NO. DATE 1 1/09	REVISION UPDATED RWY 14/32 LENGTH	BY AEF	CK'D SADW
		DRAWN CEW 5/01						
JACKSON COUNTY AIRPORT-REYNOLDS FIELD JACKSON, MICHIGAN		STEPHANIE A.D.WARD, AICP APPROVED		MEAD HUNT ENGINEERS ARCHITECTS SCIENTISTS PLANNERS				
NORTHEAST QUARTER ZONING AREA								
SHEET NO. 3		SHEET NO. 8						