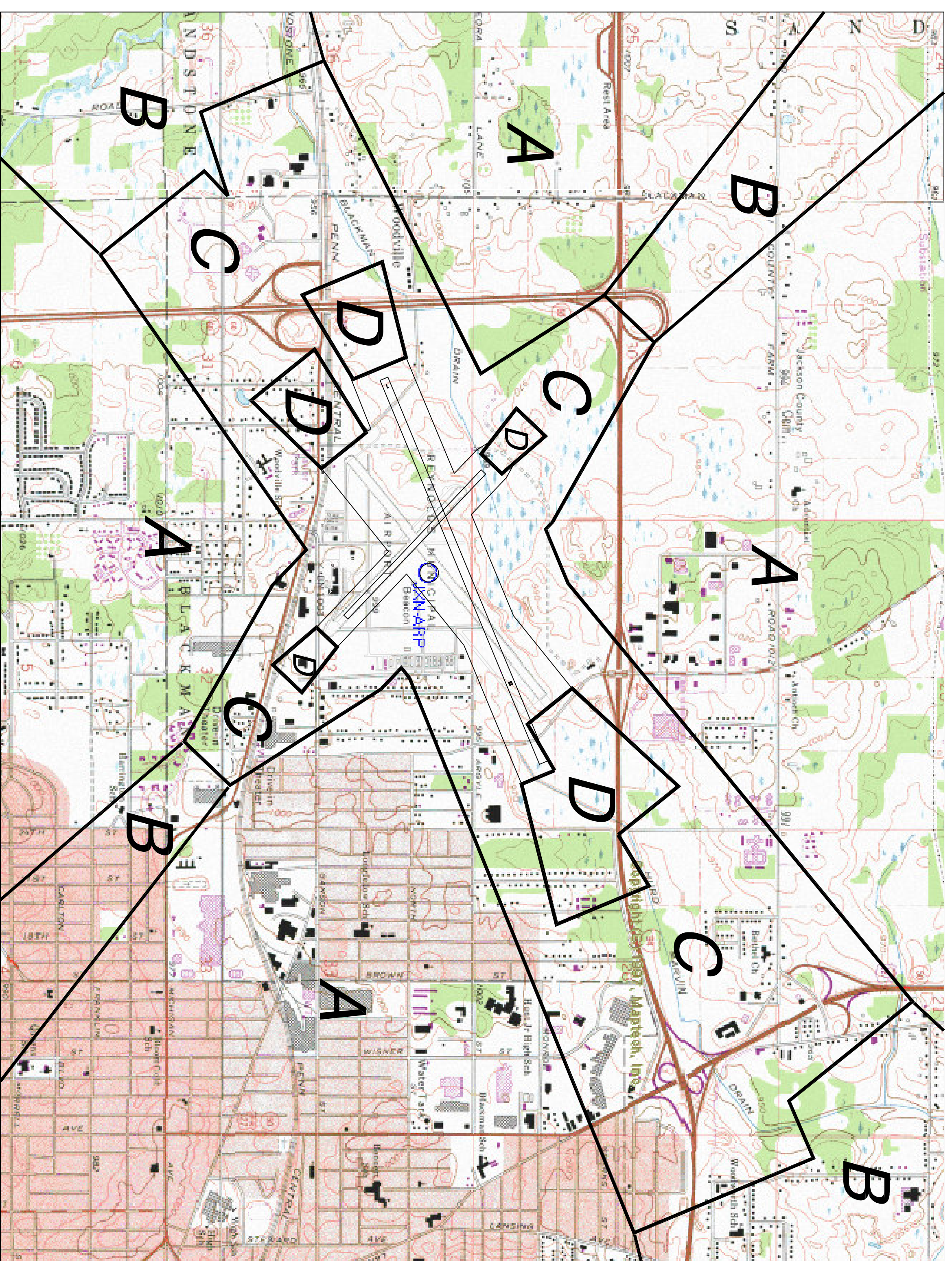


LAND USE GUIDANCE CHART II: LAND USE NOISE SENSITIVITY INTERPOLATION

SUICM NO.	LAND USE NAME	LUG ZONE	SUGGESTED STUDY	SUICM NO.	LAND USE NAME	LUG ZONE	SUGGESTED STUDY	SUICM NO.	LAND USE NAME	LUG ZONE	SUGGESTED STUDY
10	Residential			30	Manufacturing (cont.)			60	Services		
11	Household units	A-B		31	Rubber and miscellaneous plastic products - manufacturing	C-D		61	Finance, insurance and real estate services	B	
11, 11	Single units - detached	A		32	Stone, clay and glass products - manufacturing	C-D		62	Personal services	B	
11, 12	Single units - semi-attached	A		33	Primary metal industries	D		63	Business services	B	
11, 13	Single units - attached row	B		34	Fabricated metal products - manufacturing	D		64	Repair services	C	
11, 21	Two units - side by side	A		35	Professional, scientific, and controlling instruments - photographic and optical goods - watches and clocks - manufacturing	D		65	Professional services	C-D	
11, 22	Two units - one above the other	A		39	Miscellaneous manufacturing	C-D		66	Contract construction services	C	
11, 31	Apartments - walk up	B		40	Transportation, communication and utilities	D		67	Governmental services	B	
11, 32	Apartments - elevator	B-C		41	Railroad, rapid rail transit, and street railway transportation	D		68	Educational services	A-B	
12	Group quarters	A-B		42	Motor vehicle transportation	D		69	Miscellaneous services	A-C	
13	Residential hotels	B		43	Aircraft transportation	D		70	Cultural entertainment and recreational	A	
14	Mobile Home parks or courts	A		44	Marine craft transportation	D		71	Cultural activities and nature exhibitions	A	
15	Transient lodgings	C		45	Highway and street right-of-way	D		72	Public assembly	A	
19	Other residential	A-C		46	Automobile parking	D		73	Amusements	C	
20	Manufacturing			47	Communication	A-D		74	Recreational activities	B-C	
21	Food and kindred products - manufacturing	C-D		48	Utilities	D		75	Resorts and group camps	A	
22	Textile mill products - manufacturing	C-D		49	Other transportation, communication and utilities	A-D		76	Parks	A-C	
23	Apparel and other finished products made from fabrics, leather and similar materials - manufacturing	C-D		50	Trade	C-D		77	Other cultural, entertainment and recreational	A-B	
24	Lumber and wood products (except furniture) - manufacturing	C-D		51	Wholesale trade	C-D		78	Resource production and extraction	C-D	
25	Furniture and fixtures - manufacturing	C-D		52	Retail trade-building materials, hardware and farm equipment	C		79	Forestry, activities and related services	D	
26	Paper and allied products - manufacturing	C-D		53	Retail trade - general merchandise	C		80	Fishing activities and related services	D	
27	Printing, publishing and allied industries	C-D		54	Retail trade - food	C		81	Mining activities and related services	D	
28	Chemicals and allied products - manufacturing	C-D		55	Retail trade - automobile, marine craft, aircraft and accessories	C		82	Other resource production and extraction	C-D	
29	Petroleum refining and related industries	C-D		56	Retail trade - apparel and accessories	C		83	Undeveloped land and water areas		
				57	Retail trade - furniture, home furnishings and equipment	C		84	Undeveloped and unused land area (Excluding non-commercial forest development)	D	
				58	Retail trade - eating and drinking - other retail trade	C-D		85	Non-commercial Forest development areas	D	
				59				86	Water areas	A-D	
								87	Vacant floor area	A-D	
								88	Under construction	A-D	
								89	Other undeveloped land and water areas	A-D	
								90			
								91			
								92			
								93			
								94			
								95			
								96			
								97			
								98			
								99			

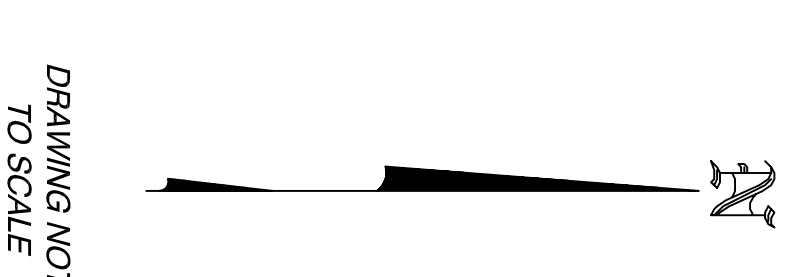
1. REFER TO LAND USE GUIDANCE CHART I.
2. ZONE "C" SUGGESTED MAXIMUM EXCEPT WHERE EXCEEDED BY SELF-GENERATED NOISE.
3. ZONE "D" FOR NOISE PURPOSES - OBSERVE NORMAL HAZARD PRECAUTIONS.
4. IF ACTIVITY IS NOT IN SUBSTANTIAL, AIR-CONDITIONED BUILDING, GO TO NEXT HIGHER ZONE.
5. REQUIREMENTS LIKELY TO VARY - INDIVIDUAL APPRAISAL RECOMMENDED.

SUICM: STANDARD LAND USE CODING MANUAL
SOURCE OF LAND USE GUIDANCE: "AIRPORT - LAND USE COMPATIBILITY PLANNING" AC 150/5050-6



LAND USE GUIDANCE CHART I: AIRPORT NOISE INTERPOLATION

LAND USE GUIDANCE ZONES (LUG)	NOISE EXPOSURE CLASS	INPUTS - AIRCRAFT NOISE ESTIMATING METHODOLOGIES L ₅₀ DAY NIGHT AVG. SOUND LEVEL	NOISE EXPOSURE CLASS	SUGGESTED NOISE CONTROLS
A	MINIMAL EXPOSURE	0 TO 55	"CLEARLY ACCEPTABLE"	NORMALLY REQUIRES NO SPECIAL CONSIDERATIONS
B	MODERATE EXPOSURE	55 TO 65	"NORMALLY ACCEPTABLE"	LAND USE CONTROLS SHOULD BE CONSIDERED
C	SIGNIFICANT EXPOSURE	65 TO 75	"NORMALLY UNACCEPTABLE"	NOISE EASEMENTS, LAND USE, AND OTHER COMPATIBILITY RECOMMENDED
D	SEVERE EXPOSURE	75 TO HIGHER	"CLEARLY UNACCEPTABLE"	CONTAINMENT WITHIN AIRPORT BOUNDARY OR USE OF POSITIVE COMPATIBILITY CONTROLS RECOMMENDED



DRAWING NOT TO SCALE

NO.	DATE	REVISION	BY	CK'D

MEAD HUNT
ENGINEERS
ARCHITECTS
SCIENTISTS
PLANNERS

LANSING OFFICE
2605 E. AIRPORT SERVICE DR.
LANSING, MI 48906
PHONE # 517-321-8334
FAX # 517-321-5932

DESIGNED	SADW	2/01
DRAWN	CEW	2/01
CHECKED	SADW	2/01
STEPHANIE A.D. WARD, AICP		
APPROVED		

JACKSON COUNTY / REYNOLDS FIELD
JACKSON, MICHIGAN
ZONING LAND USE PLAN

JOB NO.	J118-99C
DWG. NO.	
LAND-USE FILE NUMBER	38-1
SHEET NO.	8